

Australian Bred for Australian Conditions

Trophy at a glance

Leaf size:	Medium-large
Sowing rate (kg/ha):	2–4 kg when sowing with grasses & other clovers
Stolon density:	Medium with high survival
Growth habit:	Dense, spreading
Grazing management:	Suits all grazing regimes
Ploidy:	Diploid

Trophy is a new white clover cultivar developed in the NSW DPI programme based at Glen Innes. Trophy has a medium-large leaf size, combines medium stolon density with medium stolon thickness and has high stolon survival and strong autumn regrowth following summer moisture stress.

Trophy has been bred to be adapted to a wide range of Australian climates and to persist under common grazing practices. Breeding for adaption is important because white clover is not naturally suited to many Australian environments.

Trophy has shown excellent performance in trials from NSW to Victoria. It is suited to both cattle and sheep grazing, but performance is maximised under rotational grazing

Breeding

- Trophy white clover was developed as part of a collaboration between NSW Department of Primary Industries, AgResearch Ltd, and Meat and Livestock Australia.
- Using conventional processes, the project developed a locally adapted white clover cultivar with enhanced tolerance of summer moisture-stress and improved persistence for pastures in the 850-1250mm (average annual rainfall), temperate perennial pasture zone.
- The primary selection criteria were:
 - Early vigour
 - Seasonal yield and persistence
- Selection was also applied for yield, uniformity of leaf size and flowering pattern and freedom from disease and viruses.

Key features

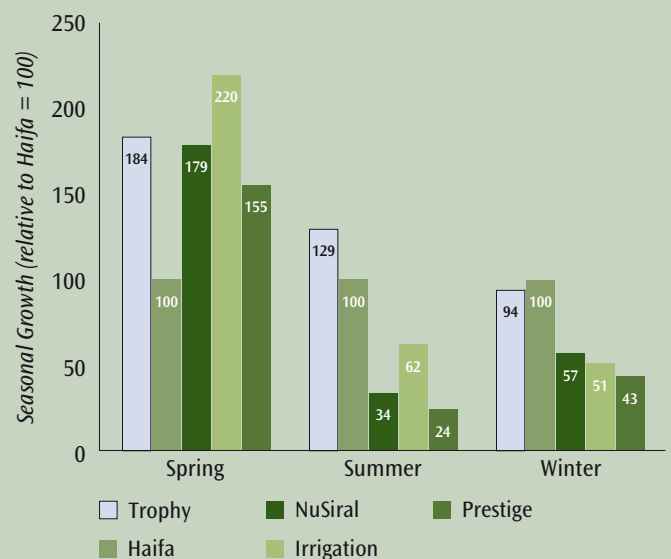
- Broadly adapted – reliably persistent
- Mid-flowering with medium to large leaf size
- High stolon survival
- Suited to set stocking or rotational grazing with cattle and sheep

Performance

Table 1. Agronomic characteristics of Trophy vs other white clovers. Glen Innes trial site.

Cultivar	Leaf size (mm ²)	Stolon thickness (mm)	Stolon density (no./m ²)	Maturity (days to flower)
Trophy	188	2.4	560	54
Haifa	200	2.6	380	51
NuSiral	182	2.6	400	51
Irrigation	167	2.3	447	54
Prestige	103	1.8	767	54

Figure 1. Seasonal growth of Trophy vs other white clovers. Glen Innes trial site.





GRASSLANDS

Trophy
WHITE CLOVER

Agronomic characteristics of Trophy white clover

- Trophy combines medium stolon density with medium stolon thickness and has high stolon survival and strong autumn regrowth following summer moisture-stress.
- Field evaluation in northern NSW and New Zealand show that Trophy is broadly adapted, expresses high summer and winter growth activity and is reliably persistent for at least four years.
- Trophy is mid-season in flowering maturity with intensive flowering prolificacy and high yield capability.
- Trophy is exceptional in retaining a high level of stolon survival through summer moisture-stress. Stolon loss over summer-autumn was only 20 percent compared to 50 percent for other cultivars.
- It is recommended that Trophy white clover seed is Gaucho treated prior to sowing.



Distributors

Trophy white clover is available from all quality seed suppliers and is proudly distributed by:

Auswest Seeds

Forbes 02 6852 1500

Brisbane 07 3272 9577

Armidale 02 6772 2343

Smyth Seeds

VIC, Sth NSW

03 5762 5288

Stephen Pasture Seeds

VIC, SA 03 5335 8055

Roberts Ltd.

TAS 03 6393 6060

Irwin Hunter & Co

WA 08 9383 4708

For further information and advice contact one of our territory managers or visit our website www.pggseeds.com

PGG Seeds Territory Managers

Dick Evans

Southern VIC, TAS, SA, WA

0418 579 220

dick.evans@bigpond.com

Sven Koljo

Northern VIC, Southern NSW

0427 772 488

skoljo@pggseeds.com

Dean Baker

QLD & Central NSW

0407 263 826

dbaker@pggseeds.com

Charlie Roberts

Northern and North Coast NSW

0427 496 032

croberts@pggseeds.com



PGG seeds



For further information & advice contact one of our territory managers or visit our website www.pggseeds.com

This information has been checked for accuracy and published in good faith. However PGG Seeds accepts no responsibility expressed or implied for misuse of information in this brochure. This information is not to be reproduced without the expressed written permission of the copyright holders. © PGG Seeds, 2009